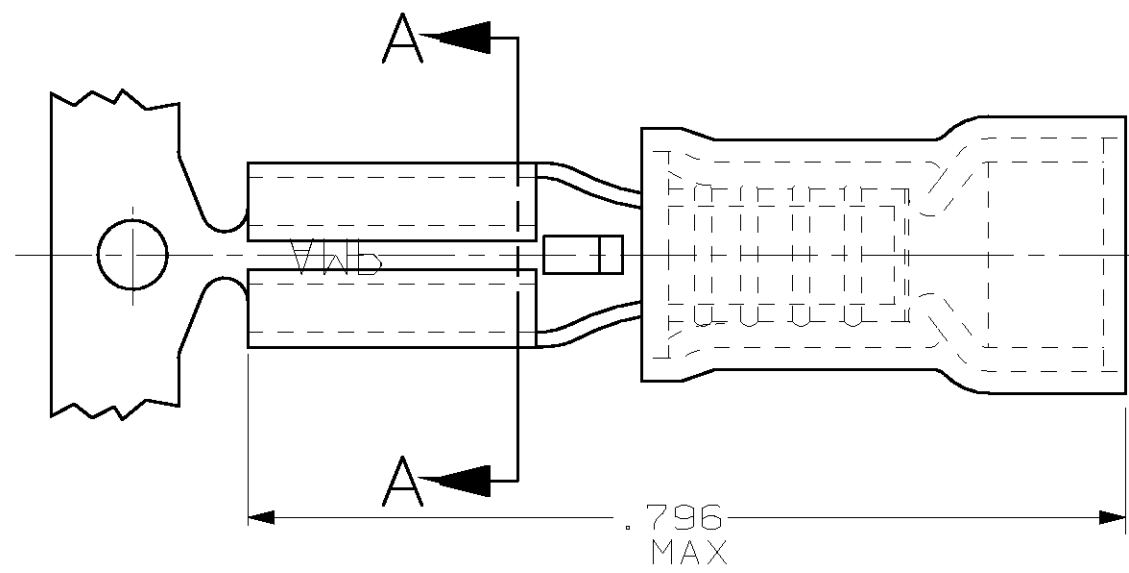
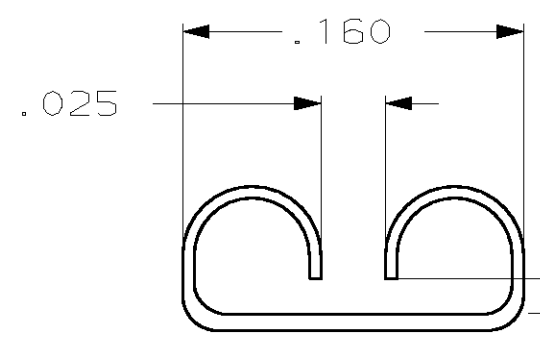
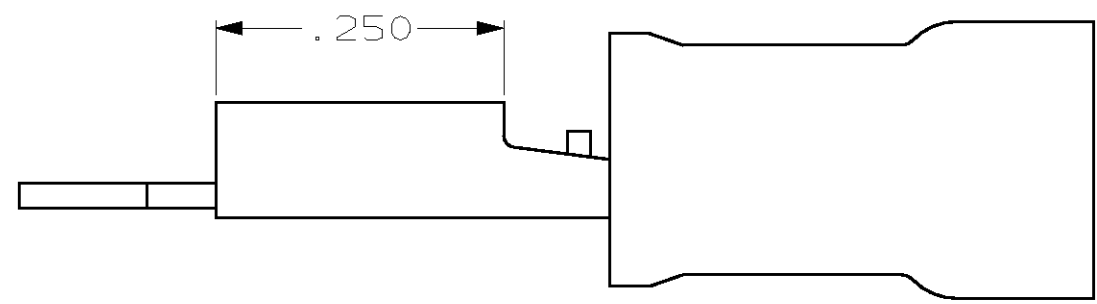


THIS DRAWING IS UNPUBLISHED. RELEASED FOR PUBLICATION, 19 .  
 © COPYRIGHT 19 BY AMP INCORPORATED. ALL RIGHTS RESERVED.

| LOC |     | DIST        |  | REVISIONS            |         |      |    |
|-----|-----|-------------|--|----------------------|---------|------|----|
| P   | LTR | DESCRIPTION |  | DATE                 | DWN     | APVD |    |
| G   | 14  | H           |  | REV PER 0G3A-0176-02 | 08APR02 | JR   | TM |



1. INSULATION RANGE .135 MAX
2. TAB THK .012±.001



FITS "110" SERIES FASTON TAB  
 (REFER TO CP-16000 FOR TAB DETAILS)

|     |              |          |
|-----|--------------|----------|
| -   | STRIP        | 350871-1 |
| QTY | PACKAGE TYPE | PART NO  |

|   |  |
|---|--|
| AMP INCORPORATED<br>CUSTOMER SERVICE SYSTEM   |  |
| FOR ADDITIONAL<br>PRODUCT INFORMATION OR<br>COPIES OF DRAWINGS<br>AND TECHNICAL DOCUMENTS | PRODUCT INFORMATION CENTER<br>1-800-522-6752 |
| FOR APPLICATION<br>TOOLING INFORMATION  | TOOLING ASSISTANCE CENTER<br>1-800-722-1111  |
| FOR ORDER ENTRY   | 1-800-526-5142                               |

|  |
|--|
| MAX RECOMMENDED OPERATING<br>TEMPERATURE:<br>- |
| VOLTAGE RATING:<br>-                           |
| CIRCULAR MIL AREA:<br>-                        |

|   |   |
|---|---|
| THIS DRAWING IS A CONTROLLED DOCUMENT FOR AMP INCORPORATED.<br>IT IS SUBJECT TO CHANGE AND THE CONTROLLING ENGINEERING<br>ORGANIZATION SHOULD BE CONTACTED FOR THE LATEST REVISION. |   |
| DIMENSIONS:<br>INCHES   | TOLERANCES UNLESS<br>OTHERWISE SPECIFIED: |
|   | 0 PLC ±-                                  |
|   | 1 PLC ±-                                  |
|   | 2 PLC ±.015                               |
|   | 3 PLC ±-                                  |
|   | 4 PLC ±-                                  |
|   | ANGLES ±-                                 |
| MATERIAL<br>BODY, BRASS<br>SLV, NYLON   | FINISH<br>BODY, PRE-TIN<br>-              |

|                  |         |
|------------------|---------|
| DWN<br>L OLMEDA  | 13NOV95 |
| CHK<br>M ELLIS   | 15NOV95 |
| APVD<br>B BARE   | 15NOV95 |
| PRODUCT SPEC     | -       |
| APPLICATION SPEC | -       |
| WEIGHT           | -       |
| CUSTOMER DRAWING |         |

|   |                    |                        |
|---|--------------------|------------------------|
| AMP Incorporated<br>Harrisburg, PA 17105-3608                         |                    |                        |
| NAME RECEPTACLE, 110 SERIES,<br>FASTON, PIDG,<br>WIRE SIZE, 22-18 AWG |                    |                        |
| SIZE<br>A3  | CAGE CODE<br>00779 | DRAWING NO<br>C-350871 |
| SCALE<br>NT5  | SHEET<br>1 OF 1    | REV<br>H               |